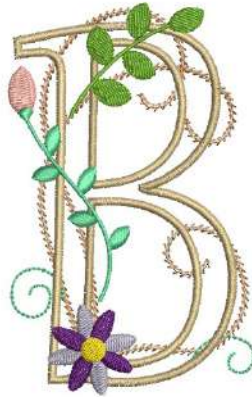


**Floral A      8586 Stitches      89 mm x 118 mm (3 1/2" x 4 5/8")      10 Colors**

- |                 |                                 |
|-----------------|---------------------------------|
| 1. Lt Brown     | Background stems                |
| 2. Lt Evergreen | Background tendrils             |
| 3. Taupe        | Letter outlines                 |
| 4. Pale Green   | Stems                           |
| 5. Lt Rose      | Bud                             |
| 6. Lt Evergreen | Leaves and stems                |
| 7. Evergreen    | Eucalyptus leaves               |
| 8. Green        | Blades of grass                 |
| 9. Lt Blue      | Flower petals                   |
| 10. Med Blue    | Flower petals                   |
| 11. Sunflower   | Flower centers and French knots |



<b>Floral B</b>	<b>8342 Stitches</b>	<b>74 mm x 116 mm (2 7/8" x 4 1/2")</b>	<b>8 Colors</b>
1. Lt Brown		Background stems	
2. Lt Evergreen		Background tendrils	
3. Taupe		Letter outlines	
4. Lt Rose		Bud	
5. Lt Evergreen		Leaves and stems	
6. Meadow Green		Leaves and stems	
7. Lavender		Flower petals	
8. Med Purple		Flower petals	
9. Sunflower		Flower center	

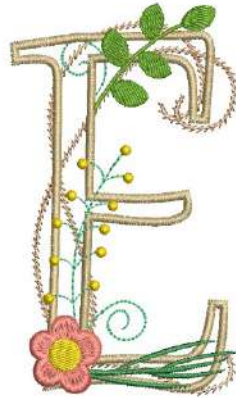


<b>Floral C</b>	<b>10590 Stitches</b>	<b>87 mm x 127 mm (3 3/8" x 5")</b>	<b>9 Colors</b>
	1. Lt Brown	Background stems	
	2. Lt Evergreen	Background tendrils	
	3. Taupe	Letter outlines	
	4. Pale Green	Stems	
	5. Lt Rose	French knots	
	6. Lt Evergreen	Leaves and stems	
	7. Evergreen	Leaves and stems	
	8. Dk Rose	Flowers	
	9. Med Rose	Petals	
	10. Sunflower	Flower centers	

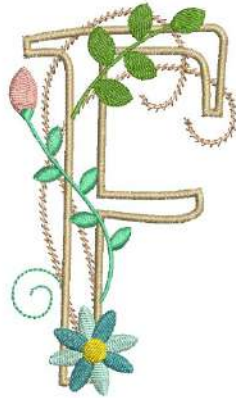


**Floral D      9122 Stitches      90 mm x 119 mm (3 1/2" x 4 5/8")      10 Colors**

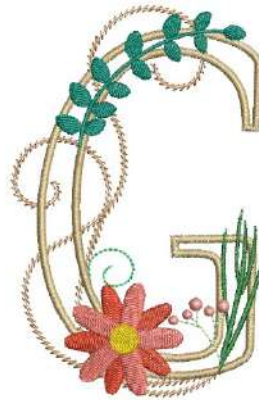
- |                 |                     |
|-----------------|---------------------|
| 1. Lt Brown     | Background stems    |
| 2. Lt Evergreen | Background tendrils |
| 3. Taupe        | Letter outlines     |
| 4. Pale Green   | Stems               |
| 5. Lt Rose      | French knots        |
| 6. Dk Rose      | Flower petals       |
| 7. Sunflower    | Flower center       |
| 8. Lt Blue      | Flower petals       |
| 9. Med Blue     | Flower petals       |
| 10. Sunflower   | Flower center       |
| 11. Evergreen   | Leaves and stems    |



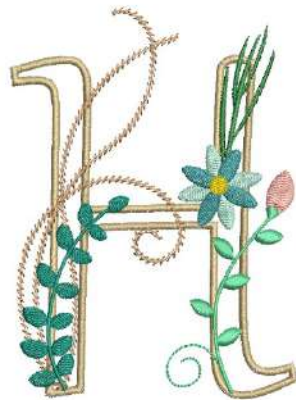
<b>Floral E</b>	<b>7936 Stitches</b>	<b>69 mm x 118 mm (2 3/4" x 4 5/8")</b>	<b>7 Colors</b>
1. Lt Brown		Background stems	
2. Lt Evergreen		Background tendrils	
3. Taupe		Letter outlines	
4. Lt Evergreen		Stems	
5. Green		Blades of grass	
6. Med Rose		Flower	
7. Meadow Green		Leaves and stems	
8. Sunflower		Flower center and French knots	



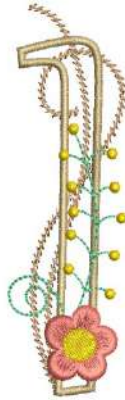
<b>Floral F</b>	<b>7130 Stitches</b>	<b>68 mm x 116 mm (2 3/4" x 4 5/8")</b>	<b>8 Colors</b>
	1. Lt Brown	Background stems	
	2. Lt Evergreen	Background tendrils	
	3. Taupe	Letter outlines	
	4. Lt Rose	Bud	
	5. Lt Evergreen	Leaves and stems	
	6. Meadow Green	Leaves and stems	
	7. Lt Blue	Flower petals	
	8. Med Blue	Flower petals	
	9. Sunflower	Flower center	



<b>Floral G</b>	<b>9122 Stitches</b>	<b>90 mm x 119 mm (3 1/8" x 4 7/8")</b>	<b>10 Colors</b>
	1. Lt Brown	Background stems	
	2. Lt Evergreen	Background tendrils	
	3. Taupe	Letter outlines	
	4. Green	Blades of grass	
	5. Pale Green	Stems	
	6. Lt Rose	French knots	
	7. Dk Rose	Flower petals	
	8. Med Rose	Flower petals	
	9. Sunflower	Flower center	
	10. Evergreen	Leaves and stems	



<b>Floral H</b>	<b>9860 Stitches</b>	<b>91 mm x 124 mm (3 1/2" x 4 7/8")</b>	<b>9 Colors</b>
1. Lt Brown		Background stems	
2. Taupe		Letter outlines	
3. Lt Evergreen		Background tendrils	
4. Lt Rose		Bud	
5. Lt Evergreen		Leaves and stems	
6. Evergreen		Leaves and stems	
7. Green		Blades of grass	
8. Lt Blue		Flower petals	
9. Med Blue		Flower petals	
10. Sunflower		Flower center	



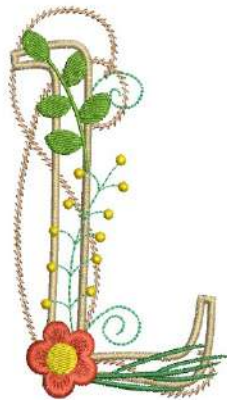
<b>Floral I</b>	<b>4180 Stitches</b>	<b>35 mm x 117 mm (1 3/8" x 4 5/8")</b>	<b>5 Colors</b>
	1. Lt Brown	Background stems	
	2. Taupe	Letter outlines	
	3. Lt Evergreen	Background tendrils and stems	
	4. Lt Rose	Flower	
	5. Sunflower	Flower center and French knots	



<b>Floral J</b>	<b>6386 Stitches</b>	<b>60 mm x 160 mm (2 3/8" x 6 3/8")</b>	<b>5 Colors</b>
	1. Lt Brown	Background stems	
	2. Taupe	Letter outlines	
	3. Lt Evergreen	Background tendrils and stems	
	4. Dk Rose	Flower	
	5. Sunflower	Flower center and French knots	



<b>Floral K</b>	<b>9549 Stitches</b>	<b>85 mm x 117 mm (3 3/8" x 4 5/8")</b>	<b>10 Colors</b>
1. Lt Brown		Background stems	
2. Taupe		Letter outlines	
3. Lt Evergreen		Background tendrils and stems	
4. Lt Rose		Flower	
5. Evergreen		Leaves and stems	
6. Green		Blades of grass	
8. Lavender		Flower petals	
9. Med Purple		Flower petals	
10. Sunflower		Flower center	

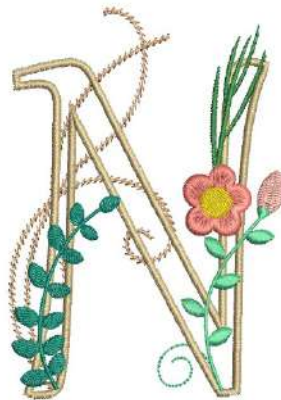


<b>Floral L</b>	<b>6980 Stitches</b>	<b>69 mm x 121 mm (2 3/4" x 4 3/4")</b>	<b>10 Colors</b>
1. Lt Evergreen		Background tendrils	
2. Lt Brown		Background stems	
3. Taupe		Letter Outlines	
4. Lt Evergreen		Stems	
5. Green		Blades of grass	
6. Dk Rose		Flower	
8. Meadow Green		Leaves and stems	
9. Sunflower		Flower center and French knots	



**Floral M**      **11351 Stitches**      **111 mm x 116 mm (4 3/8" x 4 1/2")**      **10 Colors**

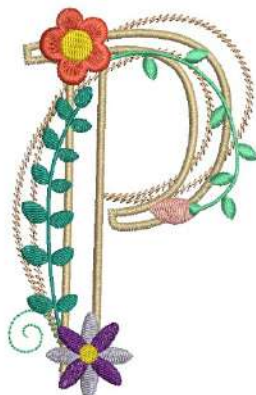
1. Lt Brown	Background stems
2. Lt Evergreen	Background tendrils
3. Taupe	Letter outlines
4. Pale Green	Stems
5. Lt Rose	Bud
6. Lt Evergreen	Leaves and stems
7. Evergreen	Leaves and stems
8. Green	Blades of grass
9. Lt Blue	Flower petals
10. Med Blue	Flower petals
11. Sunflower	Flower center and French knots



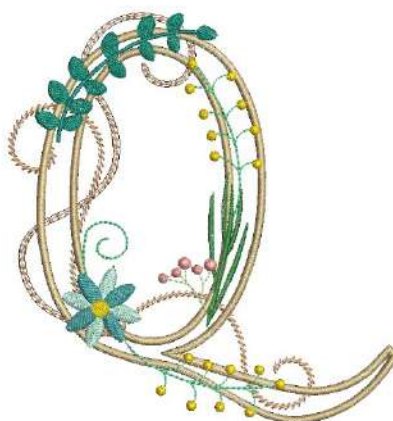
<b>Floral N</b>	<b>9259 Stitches</b>	<b>88 mm x 124 mm (3 1/2" x 4 7/8")</b>	<b>8 Colors</b>
	1. Lt Brown	Background stems	
	2. Lt Evergreen	Background tendrils	
	3. Taupe	Letter outlines	
	4. Lt Rose	Bud	
	5. Lt Evergreen	Leaves and stems	
	6. Evergreen	Leaves and stems	
	7. Green	Blades of grass	
	8. Med Rose	Flower	
	9. Sunflower	Flower center	



<b>Floral O</b>	<b>10415 Stitches</b>	<b>84 mm x 127 mm (3 3/8" x 5")</b>	<b>10 Colors</b>
	1. Lt Brown	Background stems	
	2. Taupe	Letter outlines	
	3. Lt Evergreen	Background tendrils	
	4. Green	Blades of grass	
	5. Pale Green	Stems	
	6. Lt Rose	French knots	
	7. Dk Rose	Flower petals	
	8. Med Rose	Flower petals	
	9. Evergreen	Leaves and stems	
	10. Sunflower	Flower center and French knots	



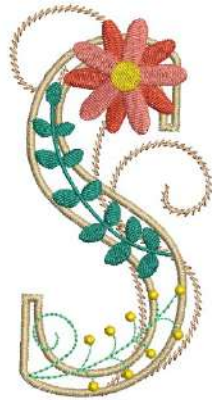
Floral P	9277 Stitches	78 mm x 122 mm (3" x 4 7/8")	9 Colors
1. Lt Brown		Background stems	
2. Lt Evergreen		Background tendrils	
3. Taupe		Letter outlines	
4. Lt Rose		Bud	
5. Lt Evergreen		Leaves and stems	
6. Evergreen		Leaves and stems	
7. Dk Rose		Flower	
8. Lavender		Flower petals	
9. Med Purple		Flower petals	
10. Sunflower		Flower centers	



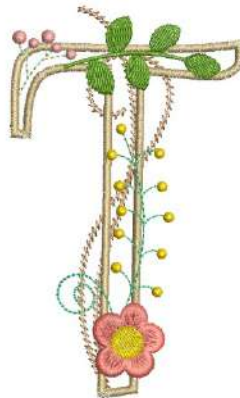
<b>Floral Q</b>	<b>11520 Stitches</b>	<b>130 mm x 136 mm (5 1/8" x 5 3/8")</b>	<b>10 Colors</b>
1. Lt Brown		Background stems	
2. Taupe		Letter outlines	
3. Lt Evergreen		Background tendrils	
4. Green		Blades of grass	
5. Pale Green		Stems	
6. Lt Rose		French knots	
7. Evergreen		Leaves and stems	
8. Lt Blue		Flower petals	
9. Med Blue		Flower petals	
10. Sunflower		Flower center and French knots	



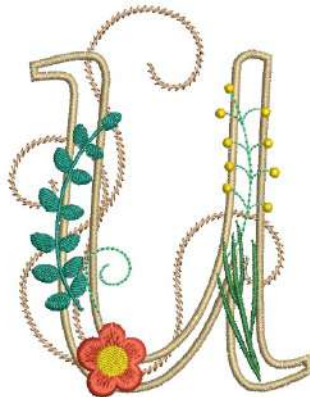
<b>Floral R</b>	<b>10586 Stitches</b>	<b>84 mm x 122 mm (3 3/8" x 4 3/4")</b>	<b>10 Colors</b>
1. Lt Brown		Background stems	
2. Lt Evergreen		Background tendrils	
3. Taupe		Letter outlines	
4. Lt Rose		Bud	
5. Lt Evergreen		Leaves and stems	
6. Evergreen		Leaves and stems	
7. Med Rose		Flower	
8. Lt Blue		Flower petals	
9. Med Blue		Flower petals	
10. Pale Green		Stems	
11. Sunflower		Flower centers and French knots	



<b>Floral S</b>	<b>8656 Stitches</b>	<b>62 mm x 120 mm (2 1/2" x 4 3/4")</b>	<b>7 Colors</b>
	1. Lt Brown	Background stems	
	2. Taupe	Letter outlines	
	3. Lt Evergreen	Background tendrils and stems	
	4. Dk Rose	Flower petals	
	5. Med Rose	Flower petals	
	6. Evergreen	Leaves and stems	
	7. Sunflower	Flower center and French knots	



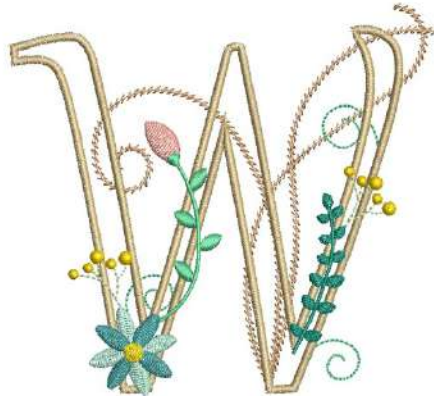
<b>Floral T</b>	<b>6393 Stitches</b>	<b>71 mm x 118 mm (2 3/4" x 4 5/8")</b>	<b>8 Colors</b>
	1. Lt Brown	Background stems	
	2. Taupe	Letter outlines	
	3. Lt Evergreen	Background tendrils	
	4. Med Rose	Flower	
	5. Sunflower	Flower centers and French knots	
	6. Meadow Green	Leaves and stems	
	7. Pale Green	Stems	
	8. Lt Rose	French knots	



<b>Floral U</b>	<b>9038 Stitches</b>	<b>97 mm x 125 mm (3 7/8" x 4 7/8")</b>	<b>7 Colors</b>
	1. Lt Brown	Background stems	
	2. Taupe	Letter outlines	
	3. Lt Evergreen	Background tendrils and stems	
	4. Green	Blades of grass	
	5. Evergreen	Leaves and stems	
	6. Dk Rose	Flower	
	7. Sunflower	Flower center and French knots	



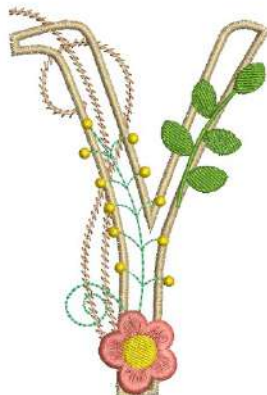
<b>Floral V</b>	<b>8394 Stitches</b>	<b>89 mm x 119 mm (3 1/2" x 4 5/8")</b>	<b>8 Colors</b>
	1. Lt Brown	Background stems	
	2. Taupe	Letter outlines	
	3. Lt Evergreen	Background tendrils	
	4. Lt Rose	Bud	
	5. Lt Evergreen	Leaves and stems	
	6. Evergreen	Leaves and stems	
	7. Lavender	Petals	
	8. Med Purple	Petals	
	9. Sunflower	Flower centers	



<b>Floral W</b>	<b>10449 Stitches</b>	<b>129 mm x 117 mm (5" x 4 5/8")</b>	<b>9 Colors</b>
1. Lt Brown		Background stems	
2. Lt Evergreen		Background tendrils	
3. Taupe		Letter outlines	
4. Pale Green		Stems	
5. Lt Rose		Bud	
6. Lt Evergreen		Leaves and stems	
7. Evergreen		Leaves and stems	
8. Lt Blue		Petals	
9. Blue		Petals	
10. Sunflower		Flower center and French knots	



<b>Floral X</b>	<b>7393 Stitches</b>	<b>87 mm x 129 mm (3 1/2" x 5")</b>	<b>7 Colors</b>
	1. Lt Brown	Background stems	
	2. Lt Evergreen	Background tendrils	
	3. Taupe	Letter outlines	
	4. Lt Rose	Bud	
	5. Lt Evergreen	Leaves and stems	
	6. Evergreen	Leaves and stems	
	7. Dk Rose	Flower	
	8. Sunflower	Flower center	



**Floral Y**

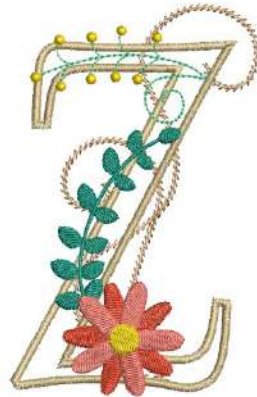
**6459 Stitches**

**74 mm x 111 mm (3" x 4 3/8")**

**6 Colors**

1. Lt Brown
2. Taupe
3. Lt Evergreen
4. Med Rose
5. Sunflower
6. Green

- Background stems
- Letter outlines
- Background tendrils and stems
- Flower
- Flower center and French knots
- Leaves and stems



<b>Floral Z</b>	<b>9075 Stitches</b>	<b>78 mm x 121 mm (3" x 4 7/8")</b>	<b>7 Colors</b>
	1. Lt Brown	Background stems	
	2. Taupe	Letter outlines	
	3. Lt Evergreen	Background tendrils and stems	
	4. Evergreen	Leaves and stems	
	5. Dk Rose	Petals	
	6. Med Rose	Petals	
	7. Sunflower	Flower center and French knots	

*All Sew4Home patterns, instructions and embroidery designs are copyrighted and are for personal use only, including this special design set produced by Michele M. Mishler. All material (projects, artwork, text, patterns, photos, etc.) is protected under the copyright laws. Manufacturing of products made from these original designs for mass production or commercial use is strictly prohibited.*